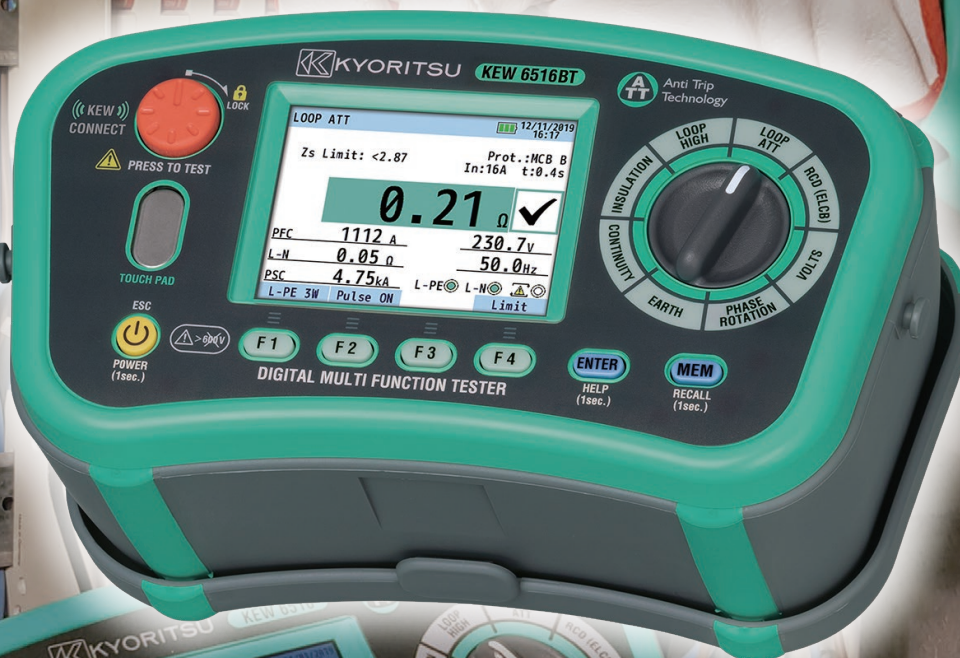


MULTIFUNCTION INSTALLATION TESTER

KEW 6516 / 6516BT

A lot of Testing Power in the hands of Electrical Installation Professionals!



Insulation 100/250/500/1000V	Loop 2/20/200/2000Ω	RCD 10/30/100/300/500/1000mA
PSC 2000A/20kA	PFC 2000A/20kA 2000A/50kA	Earth 20/200/2000Ω
ACV 300/600V	Continuity 20/200/2000Ω	Phase rotation
Frequency	SPD (Varistor)	PAT

Communication interface

USB



KEW Report

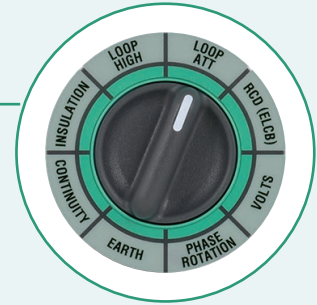
Bluetooth®



KEW Smart
Advanced

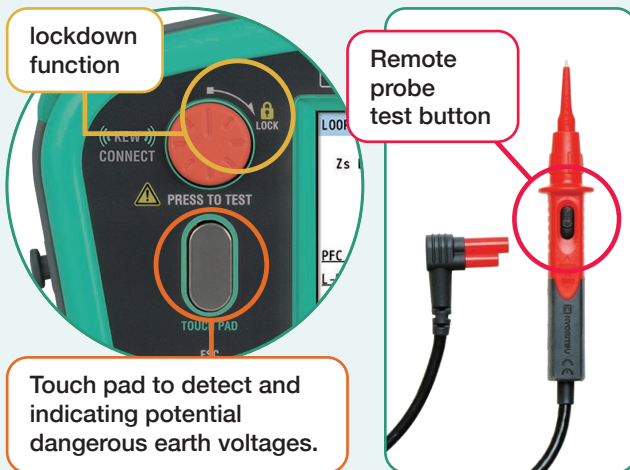
Operation in 3 simple steps

- ✔ Set the rotary dial to your testing range.
- ✔ Connect the instrument to the installation under test.
- ✔ Press the test button.



Hands free testing

By remote probe or using the Lockdown function of the test button.



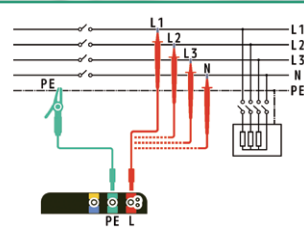
Large LCD

All the test data is shown in one large colored screen.



Anti-Trip Technology (with 2 & 3 wire)

For no trip LOOP L-PE testing on all RCDs.
 With 3 wire (L, N, PE), to get the best accuracy readings.
 With 2 wire only, very useful in case of no Neutral (i.e. 3-phase motor lines).

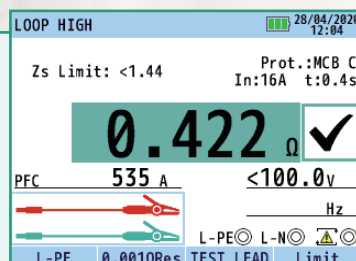


HELP Key

HELP function will show how to connect the instrument according to the function selected.

0.001 resolution

Thanks to high test current of 25A, the Loop Impedance Phase to Earth is measured with high resolution of 0.001 ohm. This can be useful when testing in the main switchboard closer to the transformer.



Loop test from a wall socket



Continuity check of equipotential bonding

Testing Power in the hands of Electrical Installation Professionals!

Wide variety of RCDs can be tested

Type AC, A, F, B (General & Selective) EV and Variable RCDs. Single and Auto test, Ramp test and Contact voltage.

RCD		28/04/2020 11:57	
0° (+)	180°	TYPE AC	UL 50V
x1/2	ms	TYPE A	
x1	ms	TYPE A	
x5	ms	TYPE B	00.0v
		TYPE B	
		TYPE F	Hz
		TYPE F	
AUTO	30mA	TYPE EV	

RCD		27/05/2020 18:15	
0°	180°	UL 50V	
x1/2	>2000ms	>2000ms	
x1	10.4ms	20.5ms	
x5	8.4ms	18.0ms	
		230.4v	
		50.0Hz	
		L-PE	L-N
AUTO	30mA	TYPE AC	

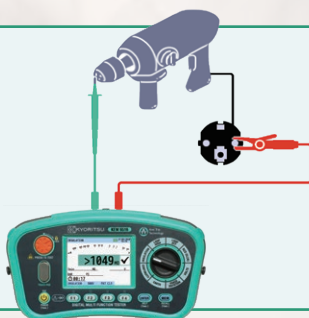
SPD test

SPD (Surge Protection Device) which contains varistor can be tested measuring the tripping voltage without damage it.



PAT test

PAT test (PAT = Portable Appliance Tester) It is possible to check the insulation resistance and earth bond continuity of portable appliances for class I and II.



Connectivity

KEW 6516 can download the test data by connecting the USB adapter (Model 8212-USB) and then print complete Test Reports by a PC. While KEW 6516BT can transfer the test data to a Tablet or Smartphone via Bluetooth. Such test data can be saved, shared and sent by email. The USB adapter can also be ordered as an option.



Zs/Ra Limit

LOOP ATT.		12/11/2019 16:17	
Zs Limit: <2.87	Prot.: MCB B	In: 16A	t: 0.4s
0.21 Ω ✓			
PFC	1112 A	230.7v	
L-N	0.05 Ω	50.0Hz	
PSC	4.75kA	L-PE	L-N
L-PE 3W	Pulse ON	Limit	

The verification of safety requirement on an electrical installation is simplified by using Zs/Ra Limit function. This function will automatically check if the measured loop impedance for TN (or earth loop for TT) is low enough to trip (disconnect) the MCB / Fuse / RCD giving the result of PASS(✓) or FAIL(x) on the display.

KEW 6516 and KEW 6516BT come complete with everything you need for testing an electrical installation

Accessories



Optional Accessories



MODEL 7272
2 cord reels with test leads, 2 spikes, an earth test lead, a carrying case.

MODEL 8017A
Extension prod long



MODEL 8259
Adapter for measurement terminal [red, yellow, green/1 set]



KEW 8601
EVSE ADAPTER
TYPE1 plug

KEW 8602
EVSE ADAPTER
TYPE2 plug



MFT and EVSE ADAPTER Kits
KEW 6516-EV2 : KEW 6516x1, KEW 8602x1
KEW 6516BT-EV2 : KEW 6516BTx1, KEW 8602x1

KEW 6516 / 6516BT Specifications

Insulation resistance					SPD(Varistor)		
Test voltage	100V	250V	500V	1000V	Max.1000V		
Measuring ranges	2.000/20.00/200.0MΩ (Auto-ranging)		20.00/200.0/1000MΩ (Auto-ranging)	20.00/200.0/2000MΩ (Auto-ranging)	0-1000V(goes up by 1V)		
Accuracy	±2%rdg±6dgt (2.000/20.00MΩ) ±5%rdg±6dgt (200.0MΩ)		±2%rdg±6dgt (20.00/200.0MΩ) ±5%rdg±6dgt (1000MΩ)	±2%rdg±6dgt (20.00/200.0MΩ) ±5%rdg±6dgt (2000MΩ)	±5%rdg±5dgt		
Rated current	1.0-1.2mA @0.1MΩ	1.0-1.2mA @0.25MΩ	1.0-1.2mA @0.5MΩ	1.0-1.2mA @1MΩ	-		
Short circuit current	1.5mA max				-		
Loop impedance							
Function	LOOP ATT		LOOP HIGH				
	L-PE/L-N(3wire)	L-PE(2wire)	L-PE(0.01ΩRes)	L-PE(0.001ΩRes)	L-N/L-L		
Rated voltage	100-260V(50/60Hz)	48-260V(50/60Hz)	48-260V(50/60Hz)	100-260V(50/60Hz)	48-500V(50/60Hz)		
Impedance range	20.00/200.0/2000Ω (Auto-ranging)		20.00/200.0/2000Ω (Auto-ranging)	2.000Ω	20.00Ω		
Accuracy	±3%rdg±6dgt		±3%rdg±10dgt	±3%rdg±25mΩ	±3%rdg±4dgt		
Nominal test current at 0Ω external loop: Magnitude/Duration at 230V	L-N:6A/60ms N-PE:10mA	L-PE:15mA	200Ω:6A/20ms 2000Ω:0.5A/20ms 20000Ω:15mA/500ms	25A/20ms	6A/20ms		
PSC/PFC							
Range	2000A/20kA(L-N(PSC)/L-PE(PFC))	2000A/20kA(PFC)	2000A/20kA(PFC)	2000A/50kA(PFC)	2000A/20kA(PSC)		
Accuracy	PSC/PFC accuracy is derived from measured loop impedance specification and measured voltage specification						
RCD							
Rated voltage	100-260V(50/60Hz)						
Function	x1/2, x1, x5, Ramp, Auto, Uc						
	6/10/30/100/300/500/1000mA/variable						
RCD type	AC(G/S)	A(G/S)	F(G/S)	B(G/S)	EV		
Trip current setting	x1/2, x1, Uc	10/30/100/300/500/1000mA(G) 10/30/100/300/500mA(S)	10/30/100/300/500mA	10/30/100/300/500mA	10/30/100/300mA		
	x5	10/30/100mA	10/30/100mA	10/30/100mA	10/30mA		
	Ramp	10/30/100/300/500mA	10/30/100/300/500mA	10/30/100/300/500mA	10/30/100/300mA	6mA	
Accuracy	Trip current	x1/2	-8% - -2%	-10% - 0%	-10% - 0%	-10% - 0%	-
		x1	+2% - +8%	0% - +10%	0% - +10%	0% - +10%	0% - +10%
		x5	+2% - +8%	0% - +10%	0% - +10%	0% - +10%	-
	Trip time	Ramp	-4% - +4%	-10% - +10%	-10% - +10%	-10% - +10%	-10% - +10%
		x1/2	2000ms(G/S):±1%rdg±2ms				-
		x1	550ms(G):±1%rdg±2ms, 1000ms(S):±1%rdg±2ms				10.5s:±1%±2ms
x5	410ms(G/S):±1%rdg±2ms				-		
Continuity							
Range	20.00/200.0/2000Ω (Auto-ranging)						
Open circuit voltage (DC)	7-14V						
Measuring current	200mA	>200mA or more(2Ω or less)					
	15mA	15mA±3mA(short-circuit)					
Accuracy	±2%rdg±8dgt						
Phase Rotation							
Rated voltage	48-600V(50/60Hz)						
Remarks	Remarks Correct phase sequence: are displayed "1.2.3" and mark Reversed phase sequence: are displayed "3.2.1" and mark						
General							
Applicable Standards	IEC 61010-1 CAT IV 300V / CAT III 600V Pollution degree 2, IEC 61010-2-034, IEC 61557-1,2,3,4,5,6,7,10, IEC 60529(IP40), IEC 61326(EMC)						
Communication Interface	USB, Bluetooth® 5.0*, Android™ 5.0 or later, iOS 10.0 or later						
Power source	LR6(AA)(1.5V) × 8						
Dimension	136(L) × 235(W) × 114(D)mm						
Weight	1350g (including batteries)						
Accessories	Mains test lead*2, 7281(Test leads with remote control switch), 7246(Distribution board test lead), 7228A(Earth resistance test leads), 8041(Auxiliary earth spikes[2 spikes/1 set]) 9084(Soft case), 9142(Carrying case), 9151(Shoulder strap), 9199(Shoulder pad), LR6(AA) × 8, Instruction manual, 8212-USB(USB adapter with "KEW Report(Software)")*3, Calibration certificate						
Optional Accessories	8212-USB(USB adapter with "KEW Report(Software)")*3, 8259(Adapter for measurement terminal), 7272(Precision measurement Cord set), 8017A(Extension prod long) 8601(EVSE ADAPTER), 8602(EVSE ADAPTER)						

*1 6516BT only

*2 7187A:British plug, 7218A(EU)European SCHUKO plug, 7221A(SA) South african plug, 7222A(AU)Australian plug

*3 8212-USB : Standard accessory for 6516, optional accessory for 6516BT

Bluetooth is a trademark or registered trademark of Bluetooth SIG, Inc.

Android is a trademark or registered trademark of Google Inc.

iOS is a trademark or registered trademark of Cisco Technology, Inc. in the United States and other countries.

Safety Warnings : Please read the "Safety Warnings" in the instruction manual supplied with the instrument thoroughly and completely for correct use. Failure to follow the safety rules can cause fire, trouble, electrical shock, etc. Therefore, make sure to operate the instrument on a correct power supply and voltage rating marked on each instrument.

For inquiries or orders :

KYORITSU ELECTRICAL INSTRUMENTS WORKS, LTD.

2-5-20, Nakane, Meguro-ku, Tokyo, 152-0031 Japan

Phone:+81-3-3723-0131

Fax:+81-3-3723-0152



www.kew-ltd.co.jp